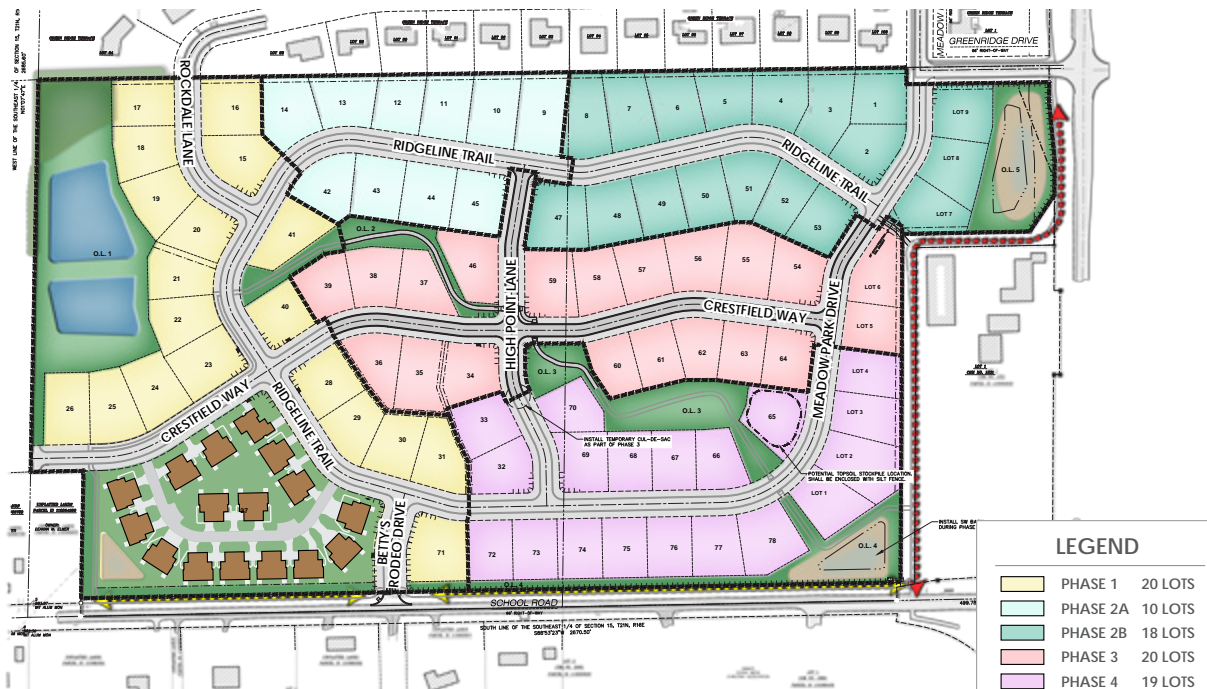
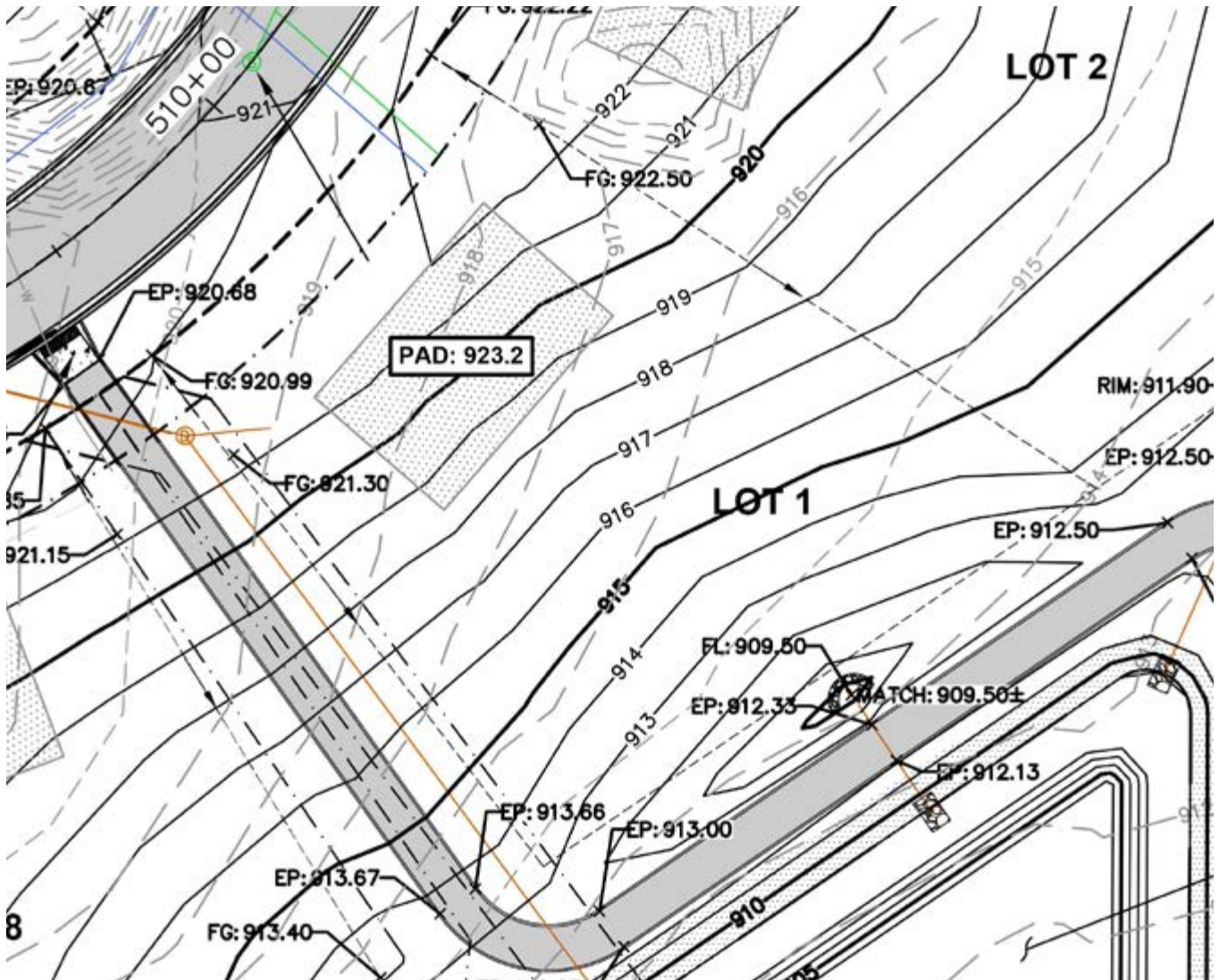




LOT NUMBER	Lot 1
LOT PRICE	\$99,900
LOT SIZE	20,134 square feet
ADDRESS	TBD
MUNICIPALITY	Village of Greenville, WI
SCHOOL DISTRICT	Hortonville Area Schools

The **Village of Greenville** offers residents the ideal blend of rural community and urban connectivity. The **Fox Highlands** subdivision offers large home sites and is located just minutes from Appleton, the Appleton International Airport, and the Fox River Mall. Home sites in **Fox Highlands** feature connectivity to existing subdivisions, parks, and trails offering residents year-round recreational opportunities.





LEGEND

	PROPERTY LINE
	RIGHT-OF-WAY
	EASEMENT LINE
	PAVEMENT SETBACK LINE
	EDGE OF PAVEMENT
	STANDARD CURB AND GUTTER
	ASPHALT PAVEMENT
	CONCRETE PAVEMENT
	PROPOSED 1 FOOT CONTOUR
	PROPOSED 5 FOOT CONTOUR
	EXISTING 1 FOOT CONTOUR
	EXISTING 5 FOOT CONTOUR
	DRAINAGE DIRECTION
	GRADE BREAK
	STORMWATER MANAGEMENT AREA
	LIGHT POLE (REFER TO PHOTOMETRIC PLAN)
	ADA PARKING SIGN
	SAWCUT EXISTING PAVEMENT
	PHASE BOUNDARY
	SANITARY SEWER

	W	WATERMAIN
		STORM SEWER
		8'x4'x4" INSULATION (PLAN VIEW)
		8'x4'x4" INSULATION (PROFILE VIEW)
		SILT FENCE
		RIP-RAP
		CONSTRUCTION ENTRANCE
		EROSION MATTING, URBAN CLASS I, TYPE B
		EROSION MATTING, CLASS II, TYPE B
	SPOT ELEVATION	
	EP - EDGE OF PAVEMENT	
	FG - FINISH GRADE	
	EC - EDGE OF CONCRETE	
	BOC - BACK OF CURB	
	MATCH - MATCH EXISTING GRADE	
	HP - HIGH POINT	
	SW - SIDEWALK	
	FG: XXX.XX	
		DITCH CHECK
		INLET PROTECTION
		BUILDING PAD AREAS

