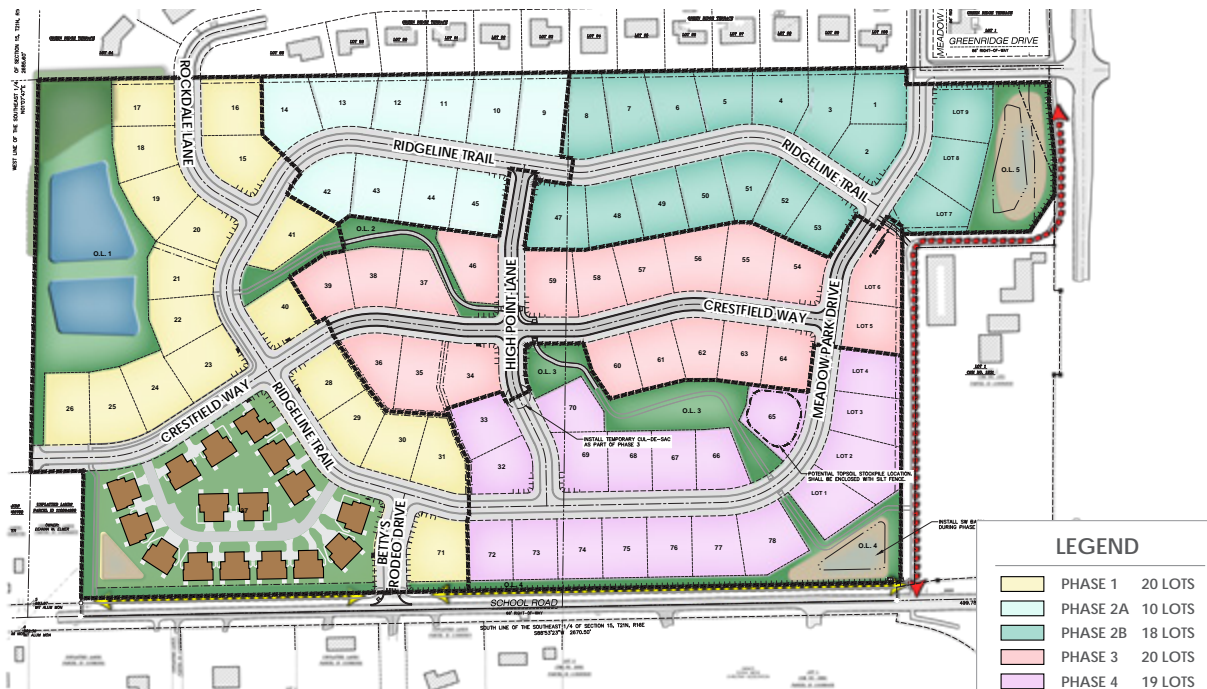
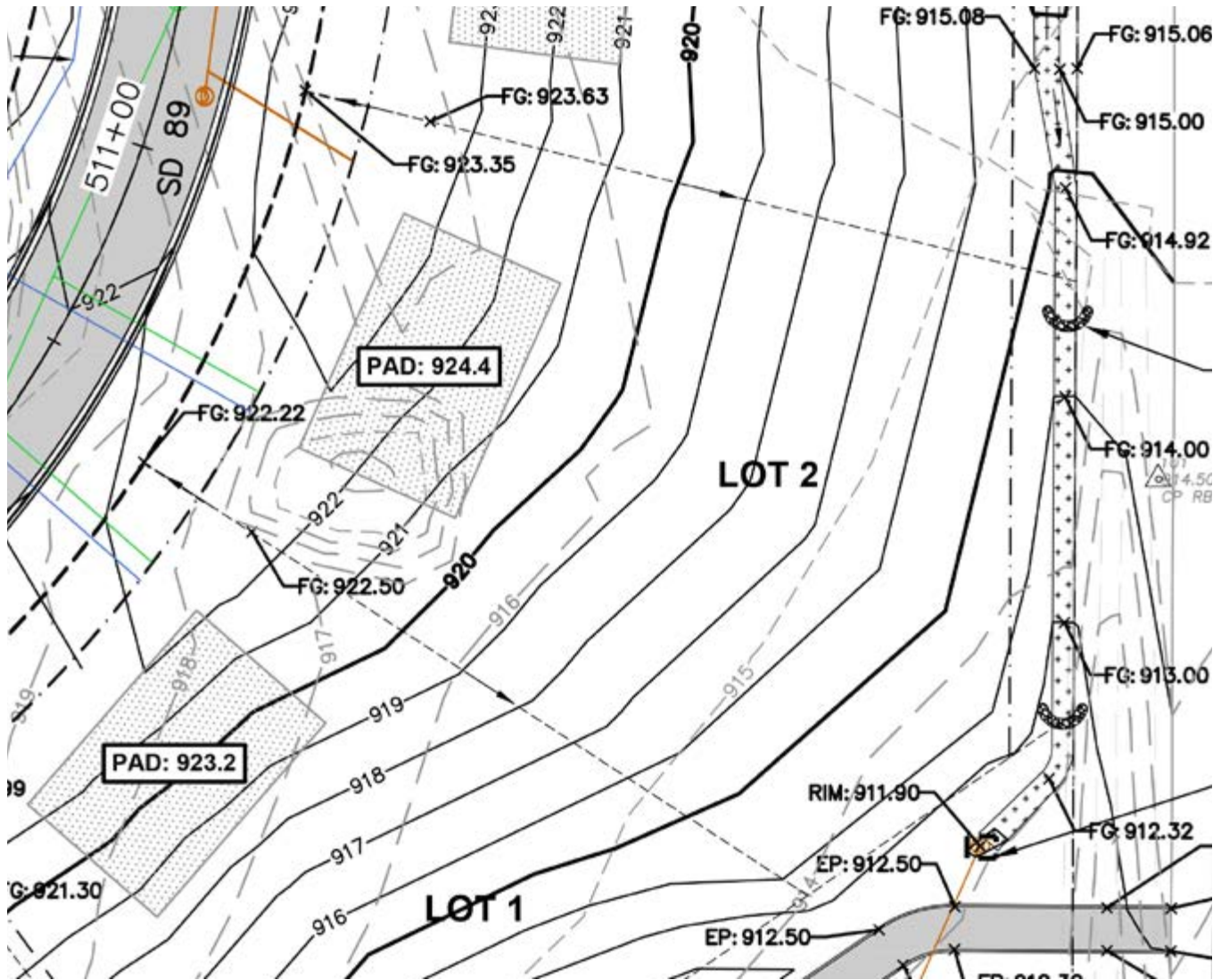


LOT NUMBER	Lot 2
LOT PRICE	\$99,900
LOT SIZE	25,780 square feet
ADDRESS	TBD
MUNICIPALITY	Village of Greenville, WI
SCHOOL DISTRICT	Hortonville Area Schools

The **Village of Greenville** offers residents the ideal blend of rural community and urban connectivity. The **Fox Highlands** subdivision offers large home sites and is located just minutes from Appleton, the Appleton International Airport, and the Fox River Mall. Home sites in **Fox Highlands** feature connectivity to existing subdivisions, parks, and trails offering residents year-round recreational opportunities.





LEGEND

	PROPERTY LINE
	RIGHT-OF-WAY
	EASEMENT LINE
	PAVEMENT SETBACK LINE
	EDGE OF PAVEMENT
	STANDARD CURB AND GUTTER
	ASPHALT PAVEMENT
	CONCRETE PAVEMENT
	PROPOSED 1 FOOT CONTOUR
	PROPOSED 5 FOOT CONTOUR
	EXISTING 1 FOOT CONTOUR
	EXISTING 5 FOOT CONTOUR
	DRAINAGE DIRECTION
	GRADE BREAK
	STORMWATER MANAGEMENT AREA
	LIGHT POLE (REFER TO PHOTOMETRIC PLAN)
	ADA PARKING SIGN
	SAWCUT EXISTING PAVEMENT
	PHASE BOUNDARY
	SANITARY SEWER

	WATERMAIN
	STORM SEWER
	8'x4'x4" INSULATION (PLAN VIEW)
	8'x4'x4" INSULATION (PROFILE VIEW)
	SILT FENCE
	RIP-RAP
	CONSTRUCTION ENTRANCE
	EROSION MATTING, URBAN CLASS I, TYPE B
	EROSION MATTING, CLASS II, TYPE B
	SPOT ELEVATION
	EP - EDGE OF PAVEMENT
	FG - FINISH GRADE
	EC - EDGE OF CONCRETE
	BOC - BACK OF CURB
	MATCH - MATCH EXISTING GRADE
	HP - HIGH POINT
	SW - SIDEWALK
	DITCH CHECK
	INLET PROTECTION
	BUILDING PAD AREAS

